

invisiwrap® uv

hydroflash® uv+

batten uv

UV-PROTECTED RAINSCREEN

installation instructions



UV-PROTECTED RAINSCREEN INSTALLATION INSTRUCTIONS

invisiwrap® uv

hydroflash® uv+

batten uv

REVIEW PRIOR TO INSTALLATION OF OPEN JOINT CLADDINGS

When InvisiWrap UV is used in an Open Joint Cladding (OJC) application, the following are required for the 25 year system warranty:

- Cap fasteners are used to attach InvisiWrap UV per fastening schedule
- All seams are taped using HydroFlash UV+ with a minimum width of 2.3 inches
- All penetrations including mechanicals, windows, and doors are properly flashed using HydroFlash UV+ flashing tape (when used as the primary water control layer)

When a minimum 1/4 inch rainscreen is installed between InvisiWrap UV and the cladding, open joint cladding boards can be installed up to a maximum of a 2 inch joint.

If the cladding is installed directly to InvisiWrap UV, the joints between cladding boards must not be greater than a 1/2 inch joint.

InvisiWrap UV is engineered to resist the ultraviolet radiation (UV) from the sun in an OJC application and complies with all ASTM standards (AC 38) to be used as the primary water and air control layer (water resistant barrier or WRB), when detailed in accordance with published installation guidelines. InvisiWrap can also be installed over a properly detailed WRB and act exclusively as the UV resistant control layer.

Identify all control layers in the building envelope (UV, Water, Air, Vapor, and Thermal) and verify continuity at all penetrations (windows, doors, outlets, mechanicals, etc.) and transitions (foundation to framing, wall to ceiling, wall to roof, etc.)

InvisiWrap is always the primary UV CONTROL LAYER for OJC. In most applications, it is also the primary water control layer when properly integrated with all penetrations. InvisiWrap can be used as the primary air control layer when carefully detailed, but may not be the most efficient location for an air control layer.

Based on building science and best installation practices, the following locations are more efficient when considering an air control layer:

- smart interior air/vapor membrane installed behind interior drywall
- interior drywall with joints and transitions sealed
- spray foam applied directly to sheathing in the framed cavity
- taping of exterior sheathing seams or using pre-weatherized sheathing systems
- taping of exterior continuous insulation seams and transitions

Given the extreme conditions in an OJC assembly, more care is needed in design and application compared to a conventional WRB in a closed cladding assembly. Plan the layout of fastening details and product overlaps to reduce number of penetrations. InvisiWrap can be seen in between the cladding joints and should be installed without wrinkles and without visible cap fasteners. All cap fasteners should be concealed behind batten strips, overlaps, and/or HydroFlash UV+ flashing tape

VIRTUAL JOBSITE VISIT

Project specific installation training and window mockups are recommended to verify proper details and reduce the learning curve for installers and design professionals. Please contact us at techsupport@obdyke.com, or fill out the request form on our website,

OR SCAN THE QR CODE HERE.



UV-PROTECTED RAINSCREEN INSTALLATION INSTRUCTIONS

invisiwrap® uv

hydroflash® uv+

batten uv

COMPATIBLE PRODUCTS FOR OPEN JOINT APPLICATIONS

FASTENERS

Cap Fasteners*
(any brand designed to seal around penetrations)

SEAM TAPE

Benjamin Obdyke HydroFlash® UV+ 2.3" Seam Tape*
SIGA® Wigluv™ Black

WINDOW FLASHING - IF PROTECTED FROM UV EXPOSURE

Benjamin Obdyke® HydroFlash® UV+ Self-Adhered Flashing Tape
Benjamin Obdyke® HydroFlash® GP Self-Adhered Flashing Tape
Benjamin Obdyke® HydroFlash® LA Liquid-Applied Flashing
ZIP System™ Flashing Tape
SIGA® Wigluv™
3M™ 8067 All Weather Flashing Tape
DuPont™ FlexWrap™ NF (sill application)

WINDOW FLASHING - IF EXPOSED TO UV

Benjamin Obdyke HydroFlash® Self-Adhered Flashing Tape*
SIGA® Wigluv™ Black

BATTENS/FURRING STRIPS

Benjamin Obdyke® Batten UV
Wood Furring Strips (optional: cover with HydroFlash® UV+)

CAULKS & SEALANTS - IF PROTECTED FROM UV EXPOSURE

OSI® QUAD® MAX Sealant
Loctite® Premium Construction Adhesive
Loctite® Premium® S40 Polyurethane
GeoCel® Construction Tripolymer
GeoCel® Pro Flex®
Bostik® 915™ Polyurethane Sealant
Bostik® 915FS™ Polyurethane Sealant
Dow Corning® 732 Multi-purpose Sealant
NPC® Solar Seal 900
Titebond® WeatherMaster™
Titebond® WeatherMaster ULTIMATE MP
Tremco® Vulkem® 116
DAP® Flexible CLEAR Sealant

*REQUIRED PRODUCTS FOR 25 YEAR PRODUCT AND LABOR LIMITED WARRANTY

InvisiWrap® UV must be installed with cap fasteners
All seams, penetrations, and transitions must be taped
with HydroFlash® UV+ Flashing Tape

UV-PROTECTED RAINSCREEN INSTALLATION INSTRUCTIONS

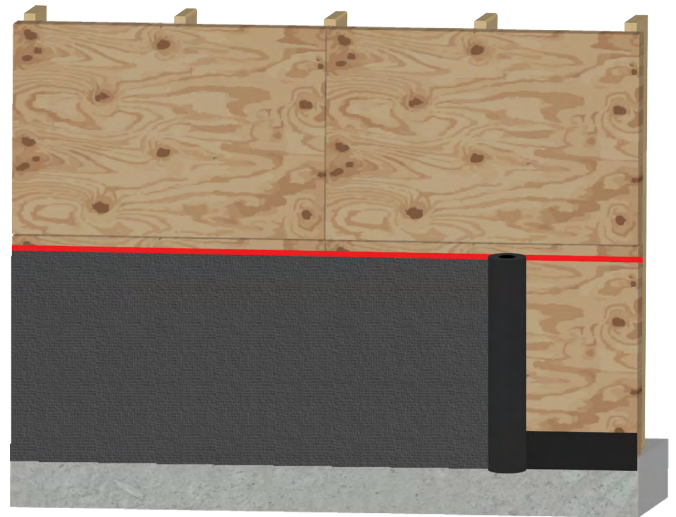
invisiwrap® uv

hydroflash® uv+

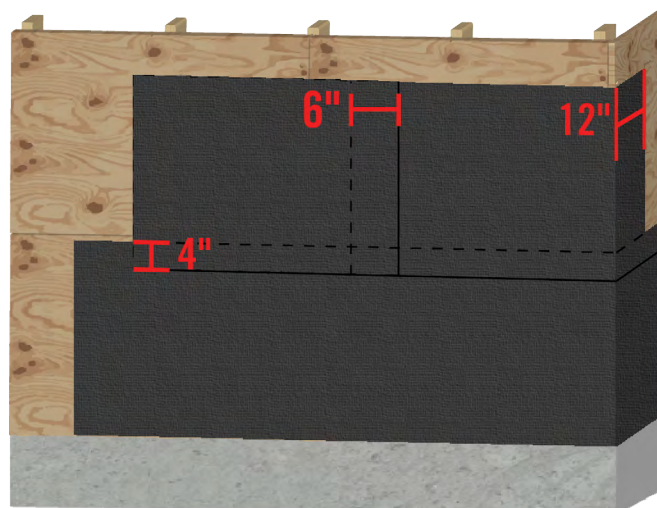
batten uv

INVISIWRAP UV LAYOUT & INSTALLATION

HOUSEWRAP LAYOUT/INSTALLATION



- Install 4 inch HydroFlash UV+ to the transition from foundation to sheathing, with a minimum 1 inch adhered to the foundation.
- Use a level chalk line to keep InvisiWrap UV straight during installation. This helps reduce wrinkles and imperfections in the WRB.
- Unroll InvisiWrap UV with **GLOSSY/SHINY side facing out** (verified when black printed Lot Number is seen on exterior.) This side has the UV resistant coating and must face out to comply with warranty requirements.
- Extend the HydroFlash UV+ and InvisiWrap UV a minimum 1 inch onto the foundation
- Overlap all horizontal seams be at least 4 inches, all vertical seams overlapped by 6 inches, and overlap corners by 12 inches.
 - InvisiWrap UV should be installed shingle lap fashion (i.e. begin installation at the base of the wall assembly).
- Do not allow the housewrap to be exposed to sunlight in excess of 365 days prior to the installation of cladding.



UV-PROTECTED RAINSCREEN INSTALLATION INSTRUCTIONS

invisiwrap® uv

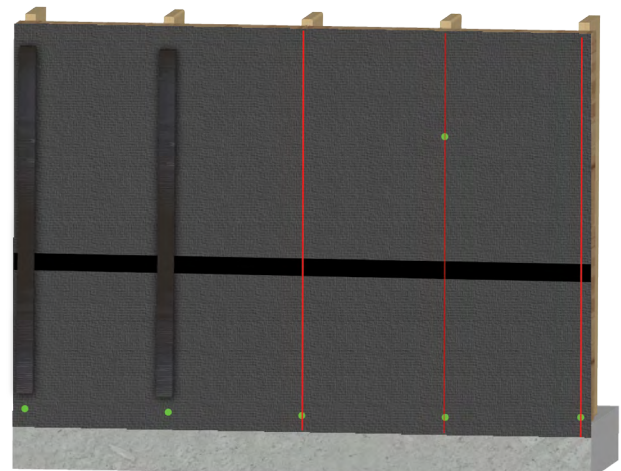
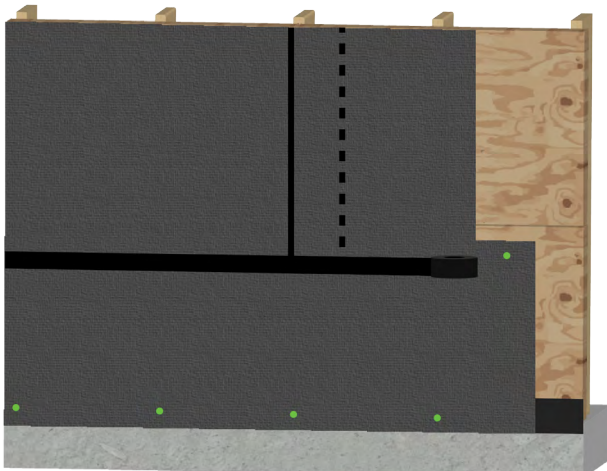
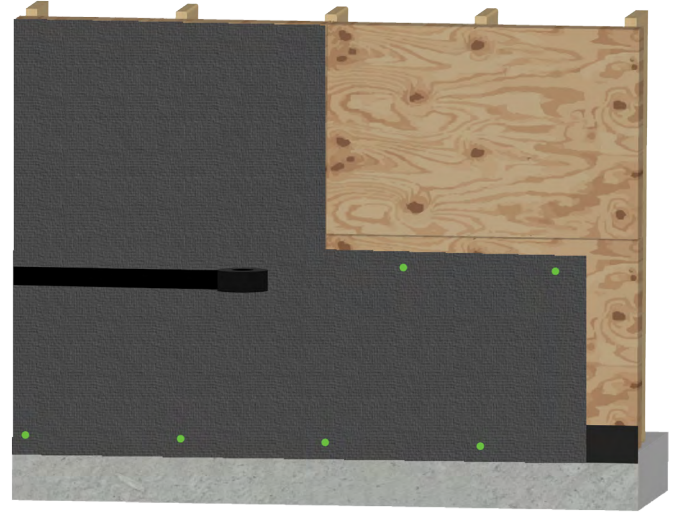
hydroflash® uv+

batten uv

OPEN JOINT INSTALLATION WALL ASSEMBLY

CAP FASTENER PLACEMENT & INVISIWRAP UV INSTALLATION

- In an open joint cladding application, it is integral to limit the use of fastener penetrations. This helps to strategically place the fasteners so that they are not seen are protected from the weather.
- The first fasteners should be applied to the top of roll, which will be covered by overlapping the next row of InvisiWrap UV. Transfer stud locations and chalk control lines for fastener placement.
- When fastening the first course of InvisiWrap UV, apply cap fasteners 2 inches away from the top edge **BETWEEN STUD LOCATIONS**.
- When fastening the bottom of InvisiWrap UV, add cap fasteners every 16 inches on-center, at the stud locations.
- Cap fasteners installed “in the field” should be limited and installed every 32” inches on-center. THIS IS ONE FASTENER EVERY OTHER STUD LOCATION. (see image below)
- Cap fasteners installed “in the field” every 32 inches on-center can be covered with a piece of HydroFlash UV+ for additional protection. These fasteners should be strategically positioned so that they are behind the furring strip/Batten UV when installed.
- Vertical seams should be laid out to fall behind Batten UV/furring strips at the stud locations.
 - Cap fasteners must be installed 2 inches from the vertical edge. The next layer of InvisiWrap should overlap the first layer by 6 inches vertically, covering the first layer of cap fasteners.
 - Fasten the second layer with cap fasteners so that they are positioned on the stud locations and cover with seam tape.
- Using HydroFlash UV+ 2.3 inch seam tape, apply over vertical seam and exposed cap fasteners.



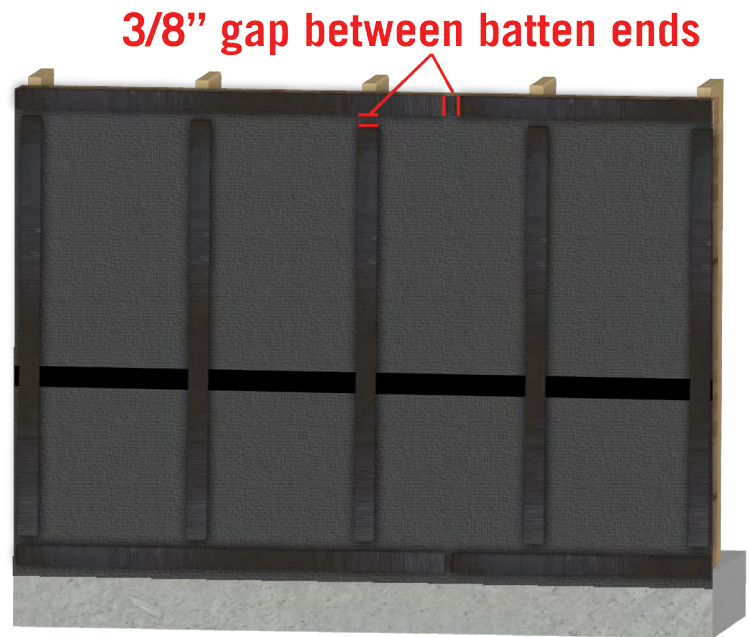
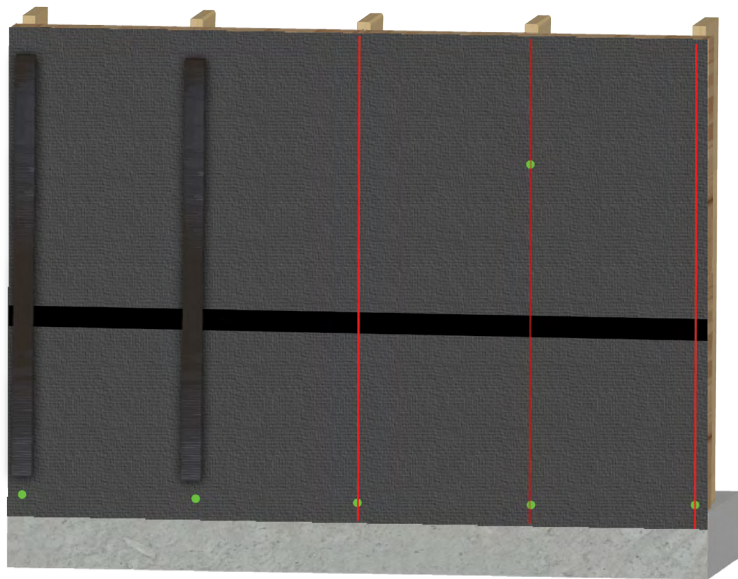
UV-PROTECTED RAINSCREEN INSTALLATION INSTRUCTIONS

invisiwrap® uv

hydroflash® uv+

batten uv

OPEN JOINT INSTALLATION WALL ASSEMBLY



BATTEN UV INSTALLATION

- Apply vertical chalk lines every 16 inches on-center at the stud locations for furring strip/Batten UV layout.
- Vertical seams should be laid out to be positioned behind the Batten UV or furring strips.
- The fasteners “in the field” should be covered with Batten UV/Furring Strips and can be covered with HydroFlash UV+.
- Install Batten UV vertically, horizontally, or diagonally over InvisiWrap UV, at 16 inches on-center - aligned with stud locations.
- Install 1 1/4 inch roofing nails, or other exterior fasteners using the slotted holes. Minimal fasteners are needed to hold the batten in place until siding is installed. Do not overdrive fasteners to allow expansion prior to cladding installation.
- **Allow a 3/8 inch space at the end of each batten to allow for expansion.**
- Battens must be installed behind corner trim and vertical window trim.
- Install siding through Batten UV and secured to the structure’s framing. Make sure to install siding per manufacturer’s instructions.

UV-PROTECTED RAINSCREEN INSTALLATION INSTRUCTIONS

invisiwrap® uv

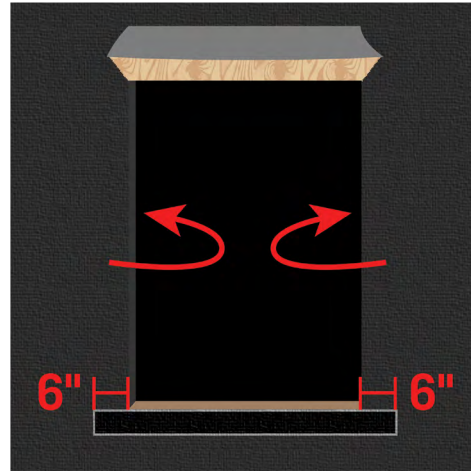
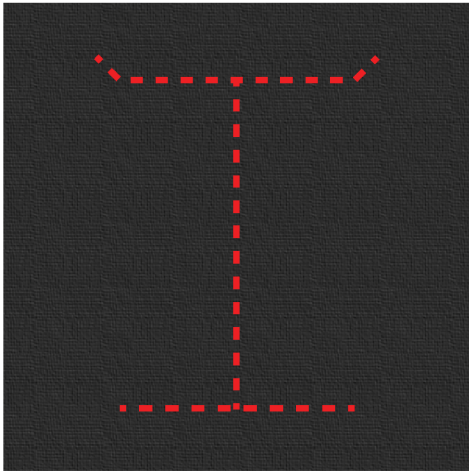
hydroflash® uv+

batten uv

OPEN JOINT INSTALLATION WINDOW ASSEMBLY

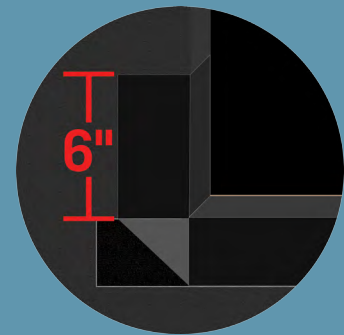
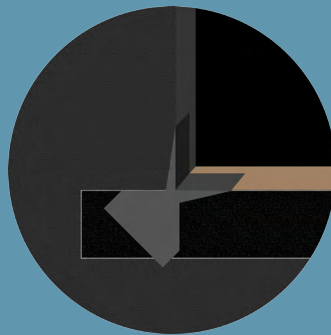
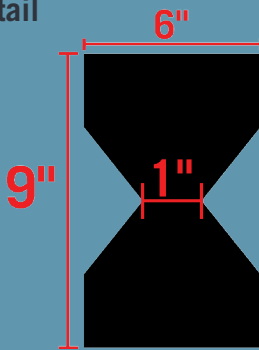
“Fold-In” Window Installation

- Wrap the entire building including the windows and door openings.
- At each opening, cut an “I”. Cut the housewrap at the head 45 degrees away from the window opening to account for flashing width.
- Fold up top trapezoid shaped “flap” and secure it temporarily with tape prior to installing the window.
- Fold side flaps into rough opening, cut and fasten.
- Install 6 inch HydroFlash UV+ flush with the window sill, and 6 inches past the rough opening on either side of the jamb. All flashing should be installed with firm pressure, using a roller or hand applicator.



WINDOW SILL DETAILS

Bow tie detail



- (optional) Install sloped sill or back dam (optimal slope .25”), except when using approved pre-manufactured sill pan.
- To properly flash the sill, cut and install corner patch flashing or use HydroCorners.
- Install HydroFlash UV+ 9” to extend at least 6 inches up the side of each jamb inside window opening.
- To use 6” HydroFlash UV+ at the sill, two pieces must be used: one piece flush with the sill edge; and the other folded into the sill.

UV-PROTECTED RAINSCREEN INSTALLATION INSTRUCTIONS

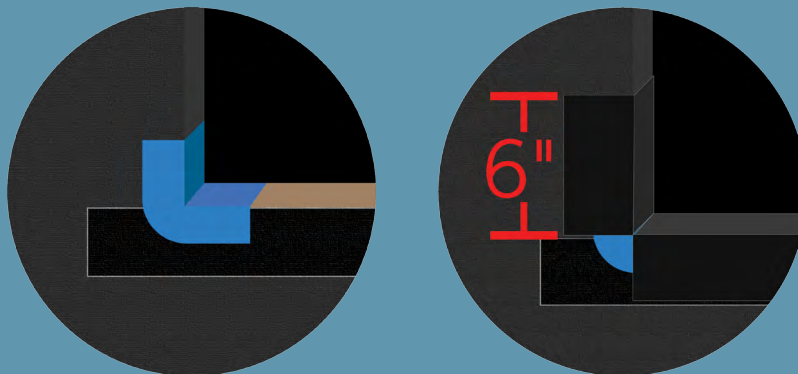
invisiwrap® uv

hydroflash® uv+

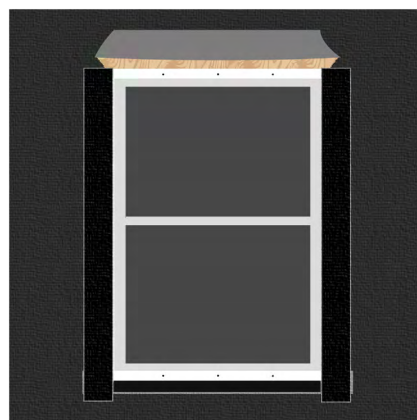
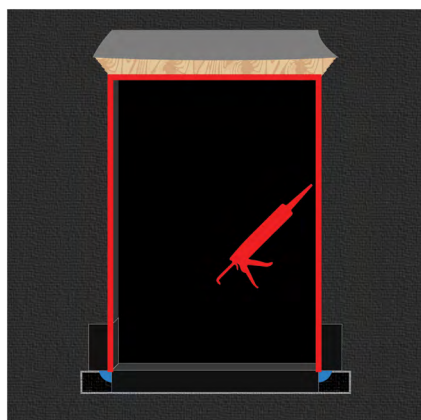
batten uv

OPEN JOINT INSTALLATION WINDOW ASSEMBLY

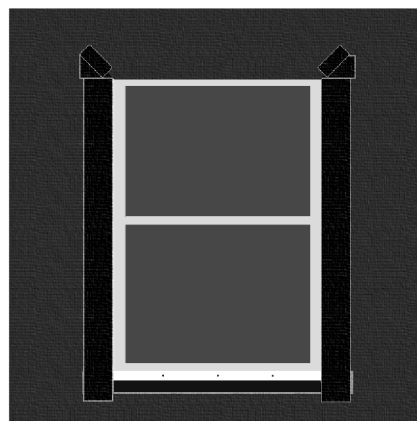
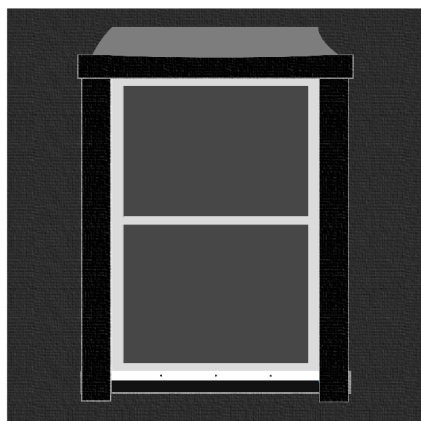
HydroCorner Detail



- To use HydroCorners instead of patches, set a HydroCorner in a bead of sealant at each corner sill and fasten with a staple. Install HydroFlash UV+ 9" to extend at least 6 inches up the inside of each jamb inside the window opening. HydroFlash has an acrylic adhesive that must be rolled in order to fully adhere to the substrate.



- Apply caulk/sealant at the jambs and head, avoiding the sill area.
- Install flanged window. And add HydroFlash UV+ over the jambs and nail fin. Surface should be clean and dry and you should always use a hand applicator or roller when applying HydroFlash products.



- Install a drip cap. Apply HydroFlash UV+ header flashing with a hand applicator. Surface should be clean and dry.
- Fold top flap down on top of flashed header and apply HydroFlash UV+ at diagonal cuts with a hand applicator.

UV-PROTECTED RAINSCREEN INSTALLATION INSTRUCTIONS

invisiwrap® uv

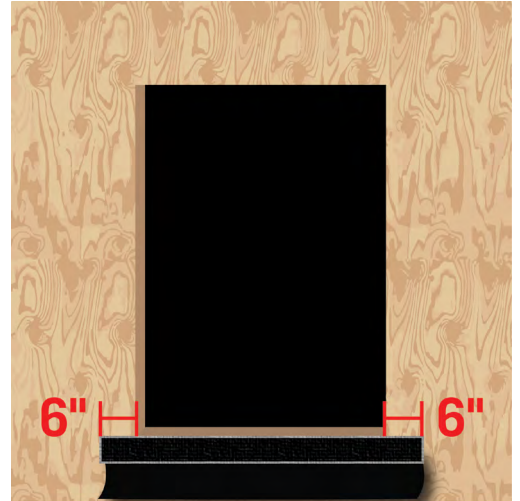
hydroflash® uv+

batten uv

OPEN JOINT INSTALLATION WINDOW ASSEMBLY

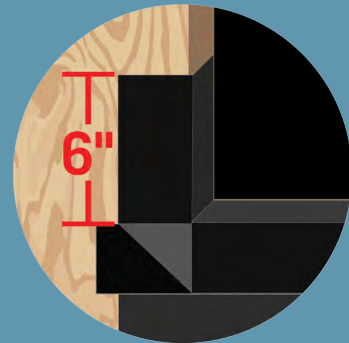
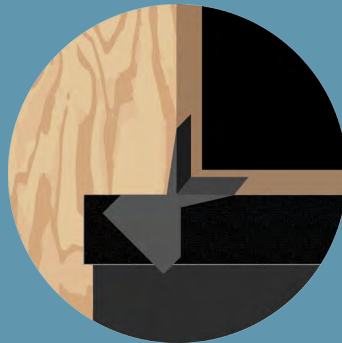
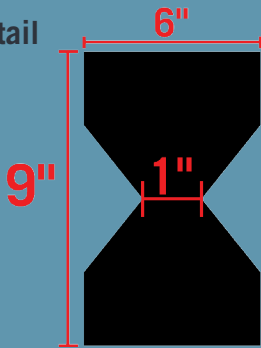
“Windows-First” Window Installation

- Secure an InvisiWrap UV “apron” at sill using a piece of HydroFlash. Apron should extend beyond each side of rough opening at least the width of the jamb flashing; not less than 6 inches. Secure apron to the wall along the top edge, but leave the bottom of the apron loose. The loose edge will overlap the layer of InvisiWrap UV installed after window installation is complete.



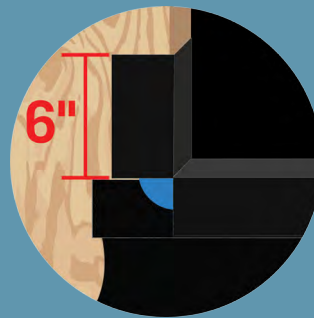
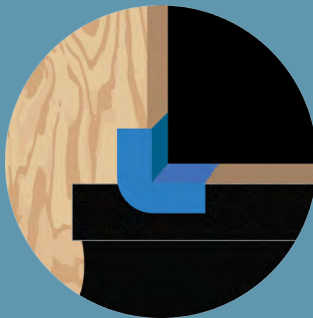
WINDOW SILL DETAILS

Bow tie detail



- (optional) Install sloped sill or back dam (optimal slope .25”), except when using approved pre-manufactured sill pan.
- To properly flash the sill, cut and install corner patch flashing or use HydroCorners.
- Install HydroFlash UV+ 9” to extend at least 6 inches up the side of each jamb inside window opening.
- To use 6” HydroFlash UV+ at the sill, two pieces must be used: one piece flush with the sill edge; and the other folded into the sill. All flashing should be installed using firm pressure, with either a hand applicator or roller.

HydroCorner Detail



- To use HydroCorners instead of patches, place a HydroCorner in each sill corner and fasten in place with a staple. Install HydroFlash UV+ 9” to extend at least 6 inches up the inside of each jamb inside the window opening.

UV-PROTECTED RAINSCREEN INSTALLATION INSTRUCTIONS

invisiwrap® uv

hydroflash® uv+

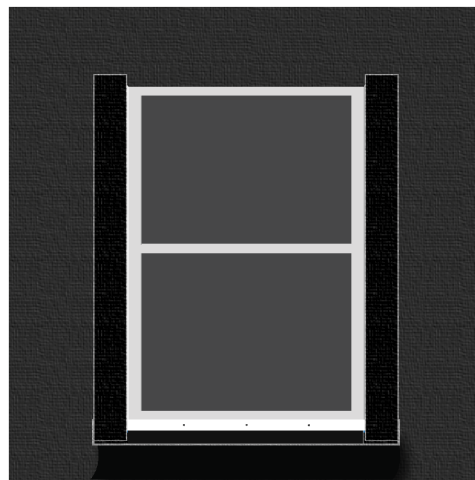
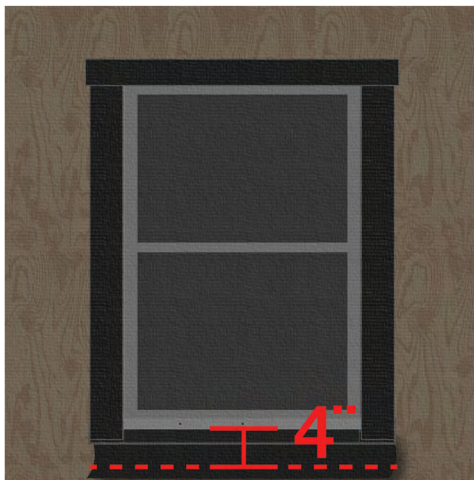
batten uv

OPEN JOINT INSTALLATION WINDOW ASSEMBLY

“Windows-First” Window Installation



- Apply caulk/sealant at jambs and head. Do not caulk at the window sill.
- Install flanged window. Install HydroFlash UV+ to the side jambs with a hand applicator. Surface should be clean and dry.
- Install drip cap. Apply HydroFlash UV+ header flashing with a hand applicator. Surface should be clean and dry.



- After you've wrapped the building with InvisiWrap UV, at window locations, cut back InvisiWrap to expose window. Do not cut through HydroFlash UV+ or InvisiWrap apron.
- At 2 - 4 inches below window, cut horizontal slit in InvisiWrap UV, extending to edges of jamb flashing. Do not cut through HydroFlash or InvisiWrap apron. Pull apron through to lap over top layer of InvisiWrap UV, creating positive drainage.
- Tape seams with HydroFlash UV+ at window jambs. Do not tape the top or bottom of window nailing flange. All flashings must be installed using firm pressure, with either a hand applicator or roller.