

QUICK START MATERIAL TAKE-OFF GUIDE

Quick reference for materials needed to complete a residential siding installation.



Exterior Wall



1. House Wrap



2. Siding 1
(Lap Siding)

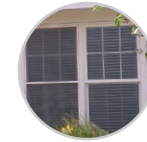


3. Siding 2
(Board & Batten)

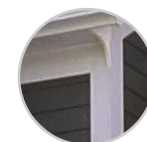


4. Siding 3
(Shingle)

Trim Detail



5. Openings



6. Corners



8. Horizontal
Bands



7. Blocked
Penetrations

Cornice



9. Soffit



10. Frieze



11. Fascia

Accessories



Caulk



Touch-Up



Fasteners



Flashings

EXTERIOR WALL AREA			
Item	Product Used	Measurement	Additional Guidance
House Wrap	Hardie™ Weather Barrier	Square Feet	Rolls availbale in 9' x 100', 9' x 150' and 10' x 150' (varies by market)
Siding 1: Lap Siding	Hardie® Plank	Square Feet	15 pcs of 8.25" lap per square
Siding 2: Board & Batten	Hardie® Panel w/ Hardie® Trim Batten	Square Feet	4 x 8 or 4 x 10 panel with battens fixed over joints and preferred spacing to meet design aesthetic
Siding 3: Shingle	Hardie® Shingle	Square Feet	43 pcs of 7" straight edge panel per square 50 pcs of 6" staggered edge panel per square

TRIM DETAIL			
Item	Product Used	Measurement	Additional Guidance
Openings	5/4x4 Hardie® Trim	Linear Feet	Count trim by pieces needed for each opening (12' each)
Corners	5/4x6 Hardie® Trim	Linear Feet	Outside and inside corners require two trim pieces OR Inside corners may be achieved by ripping a single trim piece to minimum of 1.25"
Horizontal Bands	5/4x6 or 5/4x8 Hardie® Trim	Linear Feet	Divide total linear feet by 12' to determine pieces needed
Blocked Penetrations	Cut blocks from Hardie® Trim or use prefabricated option	Linear Feet	Count number of penetrations to determine block quantities

CORNICE			
Item	Product Used	Measurement	Additional Guidance
Soffit	Hardie® Soffit	Linear Feet x Width	Use vented or non-vented as per attic ventilation needs If over 24", panels can be substituted and ripped down to size needed
Fascia	4/4x6 or 4/4x8 Hardie® Trim	Linear Feet	Divide total linear feet by 12' to determine pieces needed
Frieze	5/4x4 Hardie® Trim	Linear Feet	Divide total linear feet by 12' to determine pieces needed

ACCESSORIES			
Item	Product Used	Measurement	Additional Guidance
Caulk	OSI® Quad® Max Caulk (9.5 oz)	Tube	1.25 tubes (9.5 oz) per square of material
Touch-Up	ColorPlus® Touch-up Kit	Kit	One kit per 15 squares of lap siding; One kit per 1,000 linear feet of trim
Fasteners	Siding Nails / Finish Nails (Trim)	Box	85 - 115 siding nails per square depending on siding product and exposure 180 finish nails per 100 LF of trim
Flashings	Trim Coil	Roll	Each project varies in the amount of coil stock required for L-Flashing, Z-Flashing and Joint Flashing applications

SCOPE OF WORK

Complete this worksheet with the specific requirements and details for your project.

Project Address:	<div></div> <div></div>
------------------	-------------------------



House Wrap

Product	Size	Measurements	Qty Needed	Additional Info



Siding 1

Product	Color	Texture	Profile/Size	Measurements	Qty Needed	Additional Info



Siding 2 (Optional)

Product	Color	Texture	Profile/Size	Measurements	Qty Needed	Additional Info



Siding 3 (Optional)

Product	Color	Texture	Profile/Size	Measurements	Qty Needed	Additional Info



Openings

Product	Color	Texture	Profile/Size	Measurements	Qty Needed	Additional Info



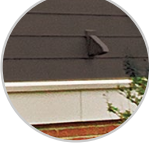
Corners

Product	Color	Texture	Profile/Size	Measurements	Qty Needed	Additional Info



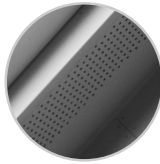
Horizontal Bands

Product	Color	Texture	Profile/Size	Measurements	Qty Needed	Additional Info



Blocked Penetrations

Product	Size	Texture	Measurements	Qty Needed	Additional Info



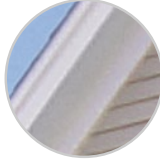
Soffit

Product	Color	Texture	Profile/Size	Measurements	Qty Needed	Additional Info
Rakes:						
Eaves:						



Fascia

Product	Color	Texture	Profile/Size	Measurements	Qty Needed	Additional Info



Frieze

Product	Color	Texture	Profile/Size	Measurements	Qty Needed	Additional Info



Caulk

Product	Color	Texture	Additional Info
Primary:			
Accents:			



Touch-Up

Product	Color	Qty Needed	Additional Info
Primary:			
Accents:			



Fasteners

Siding Nails	Product	Qty Needed	Finish Nails (Trim)	Product	Qty Needed	Additional Info



Flashings

L-Flashing	Products	Qty Needed	Z-Flashing	Product	Qty Needed	Joint Flashing	Product	Qty Needed



Miscellaneous

Examples: column wrap, porch ceiling, seam tape for housewrap, trim tabs, etc.								

Load your measurements into James Hardie's Material Estimator for a complete material list and project estimate.